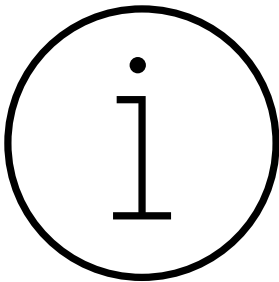


Crew Member at SuperPark

Job description



This **job description** has information about SuperPark, the job, and how you can apply.

About SuperPark



SuperPark is a multi-activity adventure park. SuperPark brings movement and smiles to people's faces!

They are based in Highpoint Shopping Centre, Maribyrnong.



SuperPark is a workplace that:

- has parks around the world
- is fair and safe
- is caring and fun
- is about having fun with customers
- is sometimes noisy
- has a lot of kids running around

What is the job?

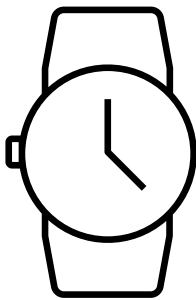


The work you could do at SuperPark is:

- Greet customers: when people arrive, say 'hello', ask them if they need help
- Keep customers safe: stand next to activity so guests can follow safety runs, line up and have fun
- Tidy the cafe: push in chairs, wipe down tables
- Stock socks and wristbands: replace socks at counter so ready for next customers



This is a paid position. You will be paid for the hours you work.

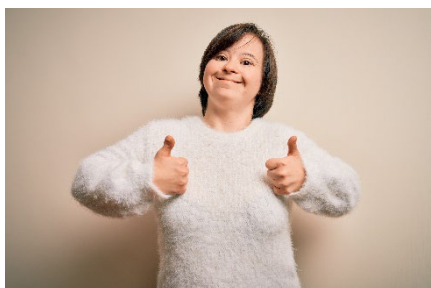


The job is part-time for 4 to 6 hours on 1-2 days per week.



If you get the job, you can agree with the managers at SuperPark to work more hours and days.

About Me



To apply for this job, you must:

- have Down syndrome.
- be 18 years or older.
- be prepared to do some training for serving customers.
- be ready to have fun and bring high energy.



The skills you need to work in this job:

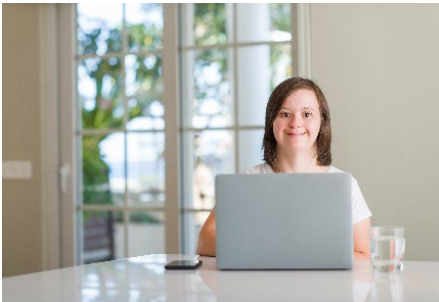
- you can work as part of a team
- you enjoy talking to people
- you like learning new things
- you like to have fun at work
- it helps if you love making kids smile!

How to apply



Send an email with your CV or Personal Profile to Brendon at:

employment@dsav.asn.au and a copy to **brendong@dsav.asn.au**



Answer these 2 questions:

1. Why do you want to work at SuperPark?
2. What are your top 3 skills?



You need to apply for this job before

Tuesday the 2nd of April.



If you have any questions you can ask Brendon.

Phone: 03 9486 9600

Email: **brendong@dsav.asn.au**